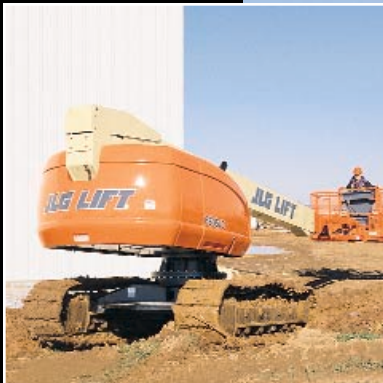


600 Crawler Series

TELESCOPIC BOOM LIFTS



Greater Terrainability



Single-Drive/Steer Joystick



High Flotation

600SC
600SJC
660SJC

www.jlg.com

JLG



Raising the Standards to Conquer the Terrain

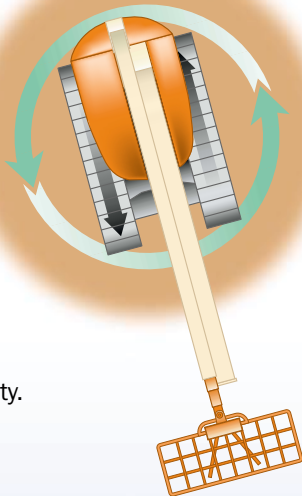
JLG is breaking new ground in the 60-foot (18.3 m) boom class with the 600 Crawler Series telescopic boom lifts. This line combines all the popular features of the proven 600 Series. We've added a crawler undercarriage, an advanced single drive/steer joystick control and a counter rotation feature that provides the improved mobility to conquer the toughest jobs and terrain.

Zero Turning Radius for Boom

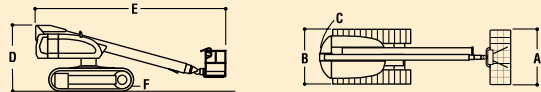
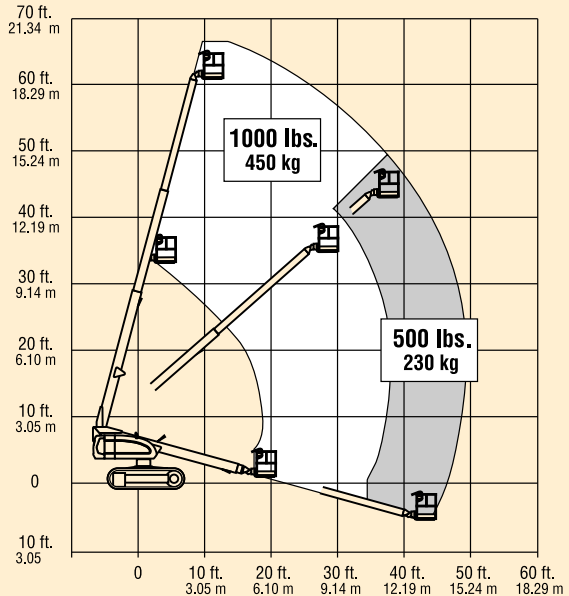
The 600 crawler is equipped with a counter rotation feature which allows the tracks to travel in opposite directions to provide a zero turning radius. You'll enjoy faster positioning and improved productivity.

Increased Flotation

Provided by a large surface area that distributes machine weight for a low ground bearing pressure, 5.45 psi (0.383 kg/cm²). Increases maneuverability on soft or sensitive surfaces.



JLG MODEL 600SC



REACH SPECIFICATIONS

| | |
|---|------------------------|
| Platform Height | 60 ft. (18.29 m) |
| Horizontal Outreach | 49 ft. 6 in. (15.09 m) |
| Swing | 360 Degrees Continuous |
| Platform Capacity, Unrestricted | 500 lbs. (230 kg) |
| Platform Capacity, Restricted | 1,000 lbs. (450 kg) |
| Platform Rotator | 160 Degrees Hydraulic |

DIMENSIONAL DATA

| | |
|--|------------------------------------|
| A. Platform Size | 36 x 72 in. (0.91 x 1.83 m) |
| B. Overall Width | 8 ft. 2 in. (2.49 m) |
| C. Tailswing | 3 ft. 9 in. (1.14 m) |
| D. Stowed Height | 8 ft. 5 in. (2.57 m) |
| E. Stowed Length | 27 ft. 11 in. (8.51 m) |
| F. Ground Clearance | 15 in. (38 cm) |
| Gross Vehicle Weight* | 22,500 lbs. (10,206 kg) |
| Max. Ground Bearing Pressure | 12 psi (0.844 kg/cm ²) |

**Certain options or country standards will increase weight.*

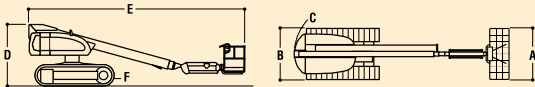
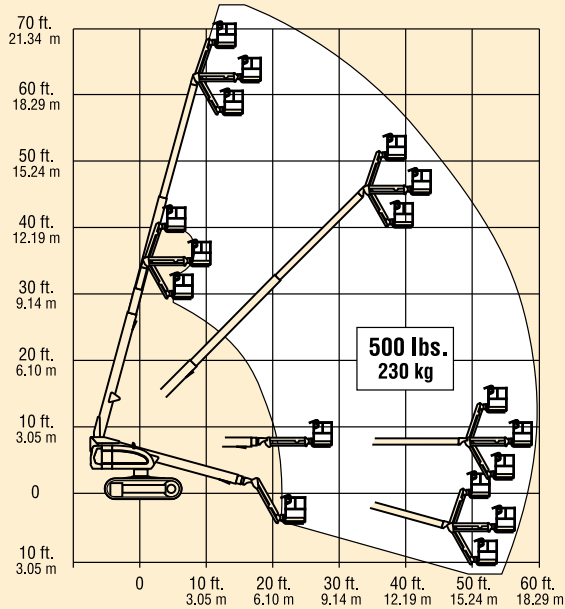
CHASSIS

| | |
|---------------------------------|-------------------|
| Drive Speed | 1.6 mph (2.6 kph) |
| Gradeability | 55% |
| Turning Radius | Zero |
| Type of Tracks | Steel |
| Optional detachable rubber pads | |
| Tracks Width | 20 in. (51 cm) |

POWER SOURCE

| | |
|-------------------------------|------------------------------|
| Diesel Engine | Deutz F4M1011L 65 hp (48 kW) |
| Fuel Tank Capacity | 39 gal. (148 L) |
| Hydraulic Reservoir | 31 gal. (117 L) |
| Auxiliary Power | 12V DC |

JLG MODEL 600SJC



REACH SPECIFICATIONS

| | |
|---------------------------------|------------------------|
| Platform Height | 60 ft. (18.29 m) |
| Horizontal Outreach | 50 ft. 4 in. (15.34 m) |
| Swing | 360 Degrees Continuous |
| Platform Capacity, Unrestricted | 500 lbs. (230 kg) |
| Platform Rotator | 180 Degrees Hydraulic |
| Jib (Range of Articulation) | 130 Degrees (+70, -60) |

DIMENSIONAL DATA

| | |
|------------------------------|------------------------------------|
| A. Platform Size | 36 x 72 in. (0.91 x 1.83 m) |
| B. Overall Width | 8 ft. 2 in. (2.49 m) |
| C. Tailswing | 3 ft. 9 in. (1.14 m) |
| D. Stowed Height | 8 ft. 5 in. (2.57 m) |
| E. Stowed Length | 31 ft. 9 in. (9.72 m) |
| F. Ground Clearance | 15 in. (38 cm) |
| Gross Vehicle Weight* | 24,600 lbs. (11,159 kg) |
| Max. Ground Bearing Pressure | 12 psi (0.844 kg/cm ²) |

*Certain options or country standards will increase weight.

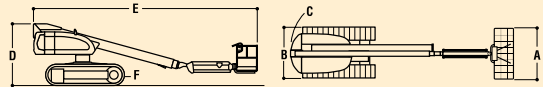
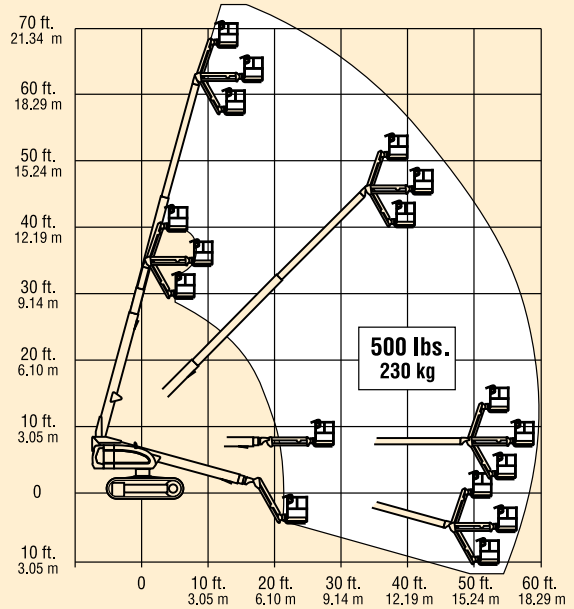
CHASSIS

| | |
|---------------------------------|-------------------|
| Drive Speed | 1.6 mph (2.6 kph) |
| Gradeability | 55% |
| Turning Radius | Zero |
| Type of Tracks | Steel |
| Optional detachable rubber pads | |
| Tracks Width | 20 in. (51 cm) |

POWER SOURCE

| | |
|---------------------|------------------------------|
| Diesel Engine | Deutz F4M1011L 65 hp (48 kW) |
| Fuel Tank Capacity | 39 gal. (148 L) |
| Hydraulic Reservoir | 31 gal. (117 L) |
| Auxiliary Power | 12V DC |

JLG MODEL 660SJC



REACH SPECIFICATIONS

| | |
|---------------------------------|------------------------|
| Platform Height | 66 ft. (20.12 m) |
| Horizontal Outreach | 56 ft. 7 in. (17.27 m) |
| Swing | 360 Degrees Continuous |
| Platform Capacity, Unrestricted | 500 lbs. (230 kg) |
| Platform Rotator | 180 Degrees Hydraulic |
| Jib (Range of Articulation) | 130 Degrees (+70, -60) |

DIMENSIONAL DATA

| | |
|------------------------------|------------------------------------|
| A. Platform Size | 36 x 72 in. (0.91 x 1.83 m) |
| B. Overall Width | 8 ft. 2 in. (2.49 m) |
| C. Tailswing | 3 ft. 9 in. (1.14 m) |
| D. Stowed Height | 8 ft. 5 in. (2.57 m) |
| E. Stowed Length | 33 ft. 6 in. (10.21 m) |
| F. Ground Clearance | 15 in. (38 cm) |
| Gross Vehicle Weight* | 27,100 lbs. (12,293 kg) |
| Max. Ground Bearing Pressure | 12 psi (0.844 kg/cm ²) |

*Certain options or country standards will increase weight.

CHASSIS

| | |
|---------------------------------|-------------------|
| Drive Speed | 1.6 mph (2.6 kph) |
| Gradeability | 55% |
| Turning Radius | Zero |
| Type of Tracks | Steel |
| Optional detachable rubber pads | |
| Tracks Width | 20 in. (51 cm) |

POWER SOURCE

| | |
|---------------------|------------------------------|
| Diesel Engine | Deutz F4M1011L 65 hp (48 kW) |
| Fuel Tank Capacity | 39 gal. (148 L) |
| Hydraulic Reservoir | 31 gal. (117 L) |
| Auxiliary Power | 12V DC |

PERFORMANCE FEATURES



Updated Control Box

600 Series style controls include an intuitive single-drive/steer joystick allowing full counter rotation. Simplified wiring makes control troubleshooting easier.



Greater Terrainability and Track Choices

This boom lift can go anywhere it needs to go—even up a 55% grade—thanks to improved traction provided by two track choices: steel track and detachable rubber pads.



Articulating Jib Provides Reach Versatility

Models 600SJC and 660SJC feature articulating jibs that provide a wider range of motion (+60° to -70° relative to the main boom). The benefit: greater reach versatility on the job site.

The JLG 1 & 5 Warranty

JLG Industries, Inc. backs our products with our exclusive “1 & 5” Warranty. We provide coverage on all products for one (1) full year, and cover all specified major structural components for five (5) full years. Due to continuous product improvements, we reserve the right to make specification and/or equipment changes without prior notification. These machines meet or exceed applicable OSHA Regulations in 29 CFR 1910.67, 29 CFR 1926.453, and ANSI A92.5-1992 as originally manufactured for intended applications.

The JLG Promise

Whether you rent or own a JLG lift, you can expect the best in terms of safety, reliability, productivity and ease of use for the operator.

Standard Features

- 36 x 72 in. (0.91 x 1.83 m) Mesh Platform
- Deutz F4M1011F 65 hp Engine
- Customized Crawler Chassis
- 19 x 138 in. (0.5 x 3.5 m) Steel Link Tracks
- Inward Swing Gate
- 180 Degree Hydraulic Platform Rotator¹
- Mesh to Mid-Rail Platform
- Platform Console Machine Status Light Panel²
- 110V-AC Receptacle in the Platform
- 5 Degree Tilt Alarm/Indicator Light
- Swing-Out Engine Module
- Gull-wing Engine Hood
- 12V-DC Auxiliary Power
- Proportional Controls
- Lifting/Tie Down Lugs
- Hourmeter
- Bolt-On Lifting Lugs
- Horn

Available Options

- 36 x 96 in. Platform
- Platform Work Lights
- ½ in. Air Line to Platform³
- Welding Leads to Platform
- Oxy/Acetylene Line³
- 2500W Generator
- Head & Tail Lights
- Travel Alarm
- All Motion Alarm
- Flashing Amber Beacon
- Cold Weather Start Kit (Deutz)⁴
- Hostile Environment Kit⁵

1. 160 Degrees on 600SC.
2. Provides indicator lights at platform control console for system distress, low fuel, 5 degree tilt light and foot switch status.
3. Oxy and ½ in. air line not available together.
4. Includes ether assist, battery heater, oil manifold heater and oil tank heater.
5. Includes console cover, boom wipers and cylinder bellows.

JLG Industries, Inc.

1 JLG Drive
McConnellsburg, PA 17233-9553
Telephone 717-485-5161
Toll-free in US 877-JLG-LIFT
Fax 717-485-6417
www.jlg.com

